



📍 13 St. Marys Close, Hilperton Marsh, Trowbridge, Wiltshire, BA14 7PN

🔗 Offers In Excess Of £350,000

A spacious, five bedroom, two reception room, two bathroom, semi detached house with good sized garden, useful outbuilding/store and ample driveway parking, which is situated on a popular road, within walking distance of schools and the Kennet on Avon canal.

- Spacious, Extended, Semi Detached House
- Five Bedrooms, Two Reception Rooms
- Bathroom & Shower Room
- Large Kitchen With Contemporary Units & Utility Room
- Snug/Office
- Good Sized Rear Garden
- Useful Brick Built Outbuilding
- Ample Driveway Parking
- NO ONWARD CHAIN

🏡 Freehold

🏠 EPC Rating C



A spacious, semi detached house with good sized garden, useful outbuilding/store and ample driveway parking, which has been greatly extended and remodelled to create a wonderful family home, on a popular road, within walking distance of the Kennet and Avon canal. NO ONWARD CHAIN

The property offers excellent accommodation over two floors comprising; entrance hall, good sized sitting room, fabulous kitchen with contemporary units, built in oven, hob and extractor, door opening onto the rear garden and open plan to a dining area with patio doors opening onto the rear, utility room with shower room off, snug/office/ground floor bedroom, four double bedrooms, one single bedroom and a bathroom with bath and separate shower cubicle.

Externally; there is a large, block paved driveway to the front of the property for parking numerous vehicles. Gated access and path to the side leading to a good sized rear garden, which is predominately lawned and enjoys a good deal of privacy. Detached, brick built store/workshop (formerly a garage which became inaccessible by car when the extension was built).

Situation

Hilperton is a popular village which is situated on the outskirts of Trowbridge and offers its own primary school, public house, church, village hall and is close to open countryside walks and the Kennet and Avon canal. The nearby village of Holt, offers further excellent pubs and the National Trust "Court gardens" with areas to relax and walk. Transport links include a regular bus service to Trowbridge where there is a main line train station offering easy access to the Georgian city of Bath (approximately 7 miles) and Bristol Temple Meads (approximately 18 miles).

Property Information

Council Tax Band; D

EPC Rating; C

Freehold

Mains Services

Gas Fired Central Heating

UPVC Double Glazing



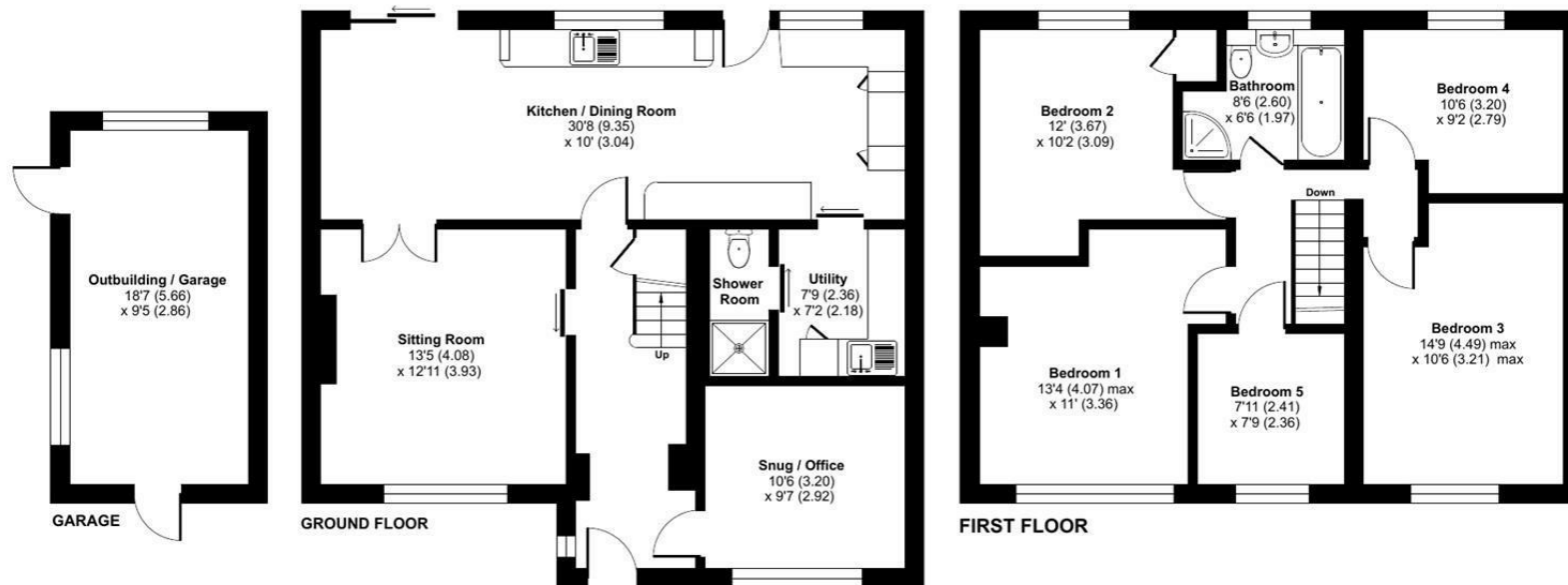
St. Marys Close, Hilperton Marsh, Trowbridge, BA14

Approximate Area = 1428 sq ft / 132.6 sq m

Garage = 174 sq ft / 16.1 sq m

Total = 1602 sq ft / 148.7 sq m

For identification only - Not to scale



Floor plan produced in accordance with RICS Property Measurement 2nd Edition, Incorporating International Property Measurement Standards (IPMS2 Residential). © nitchcom 2026. Produced for Strakers. REF: 1414493

Disclaimer These particulars, whilst believed to be accurate are set out as a general outline only for guidance and do not constitute any part of an offer or contract. Intending purchasers should not rely on them as statements of representation of fact, but must satisfy themselves by inspection or otherwise as to their accuracy. No person in this firms employment has the authority to make or give any representation or warranty in respect of the property. All measurements and distances are approximate only. Your home is at risk if you do not keep up repayments on a mortgage or other loan secured on it.